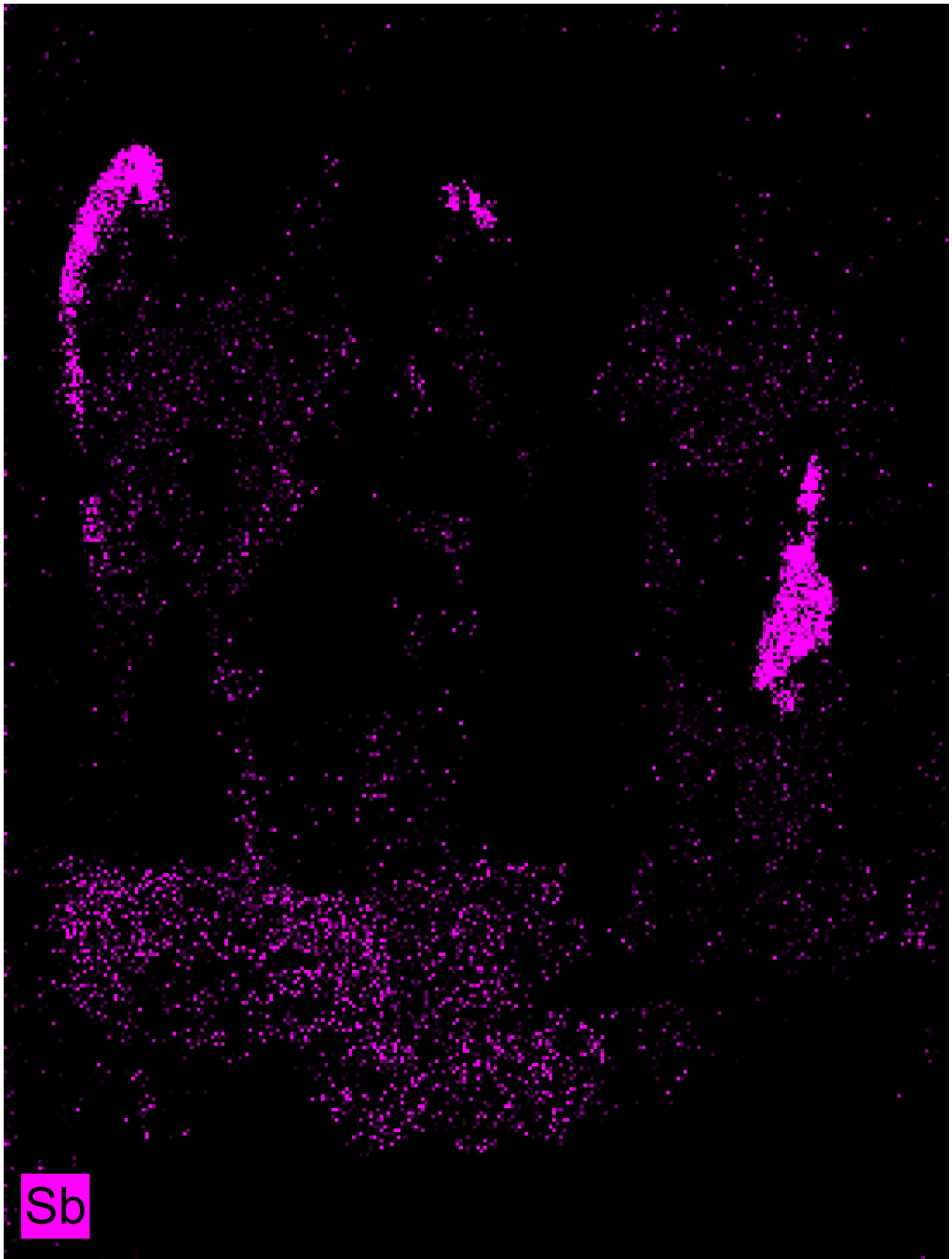






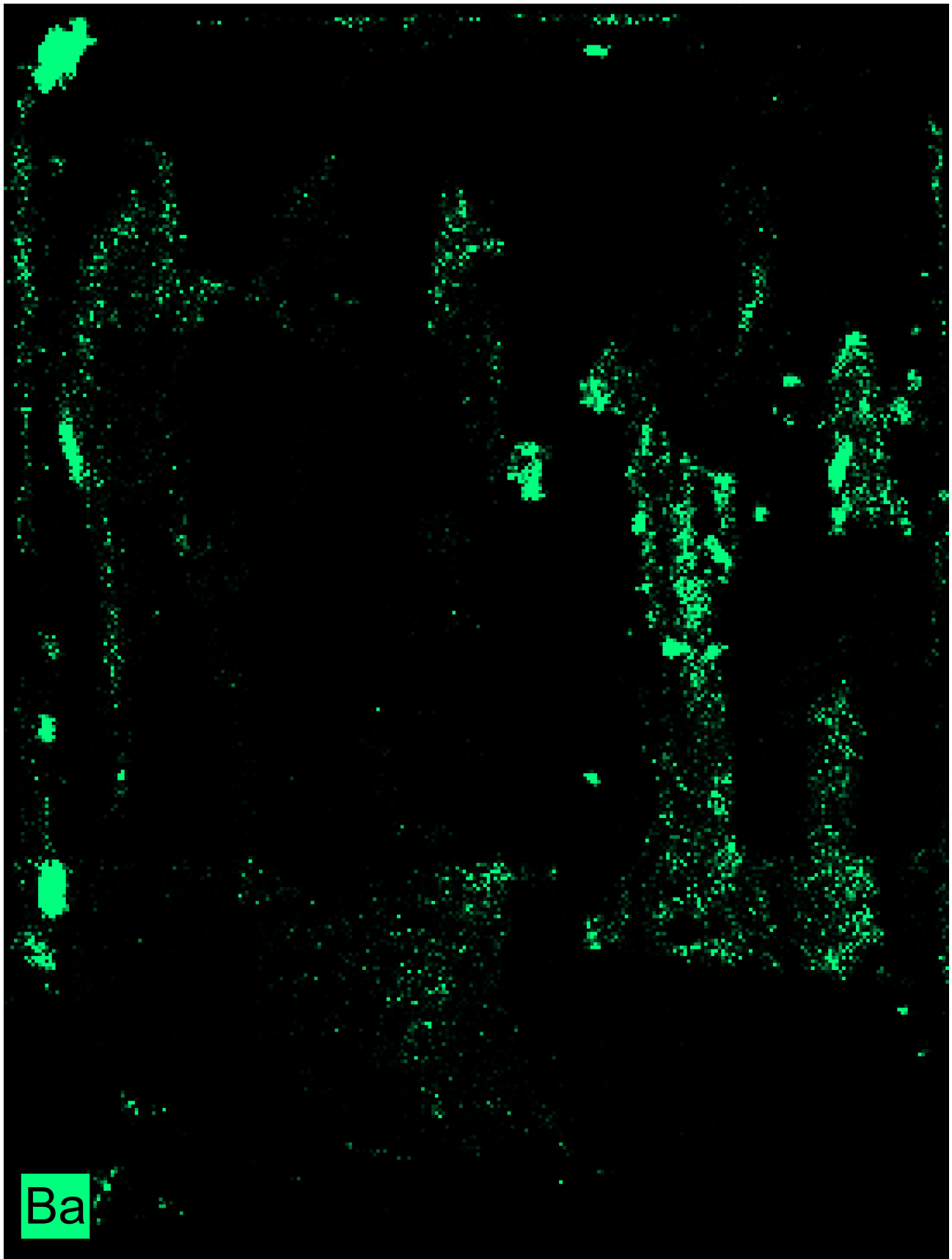


Au

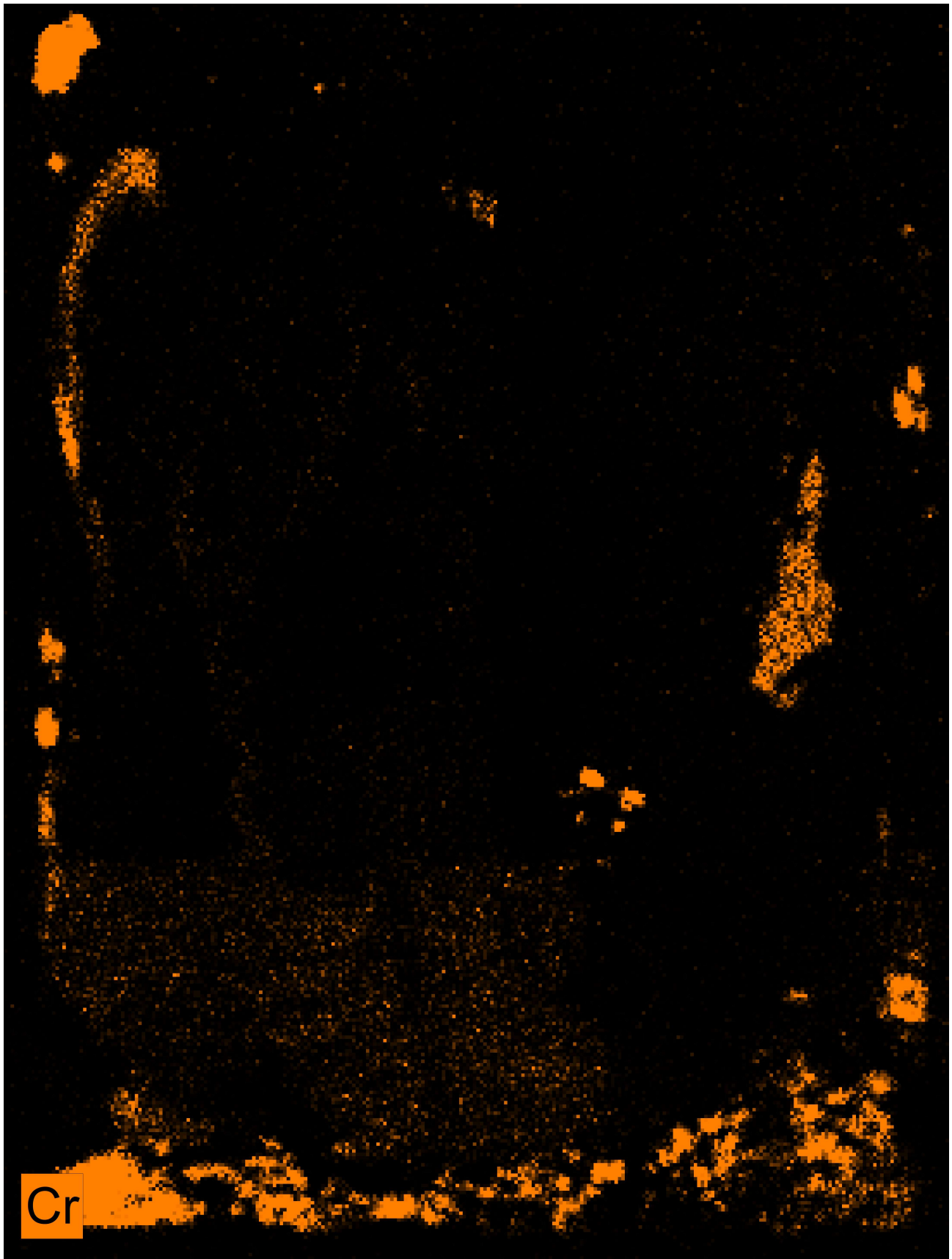


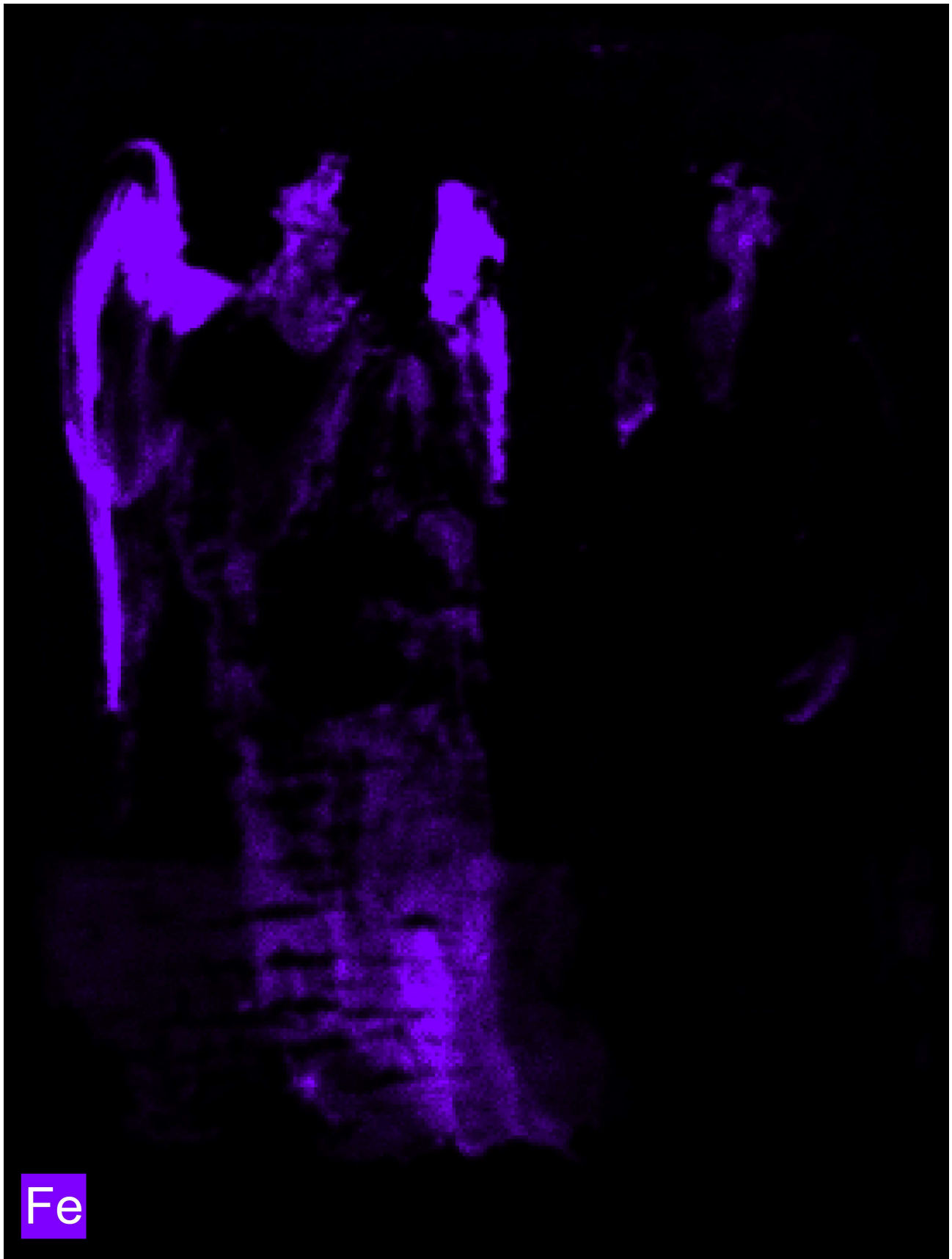


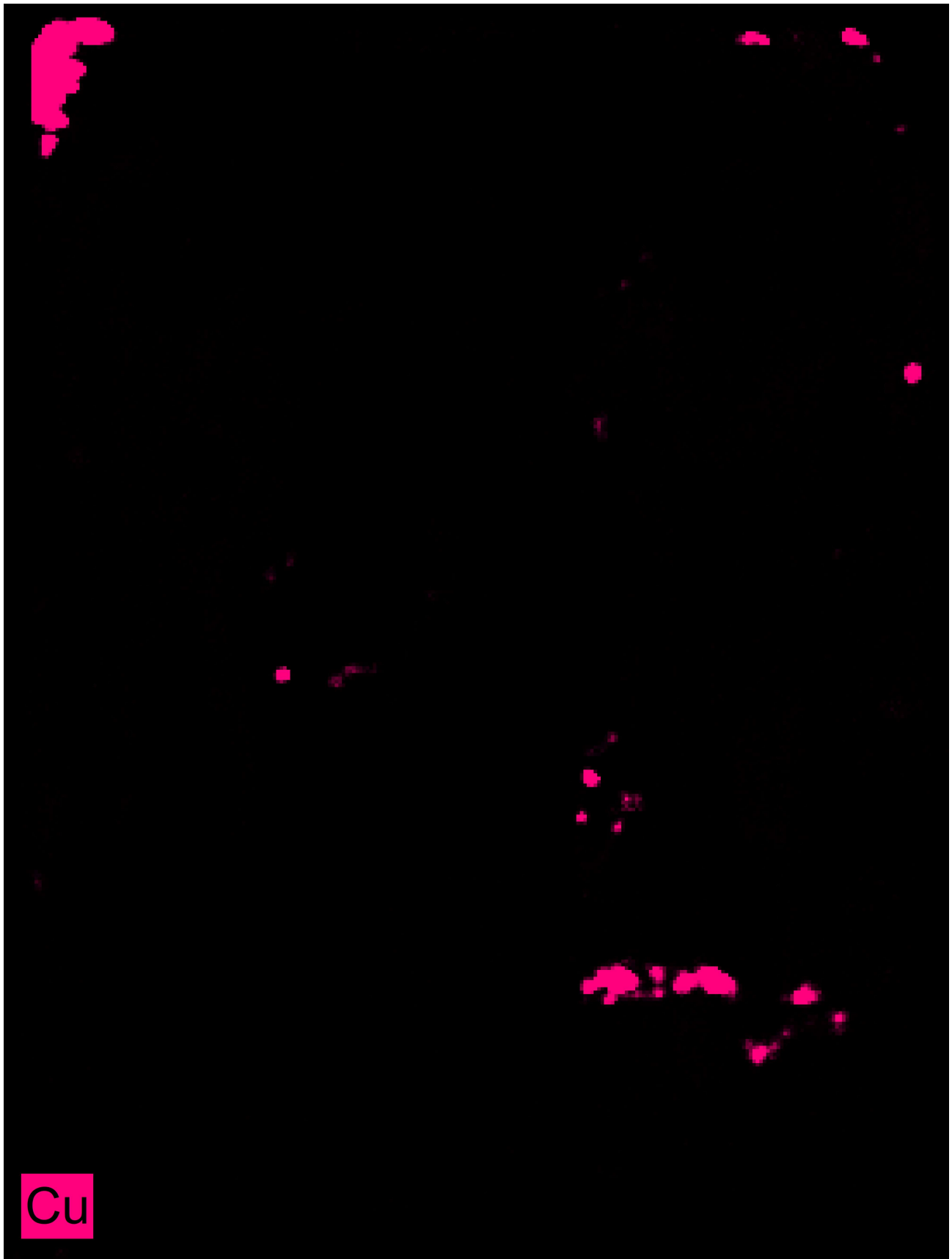
Ca

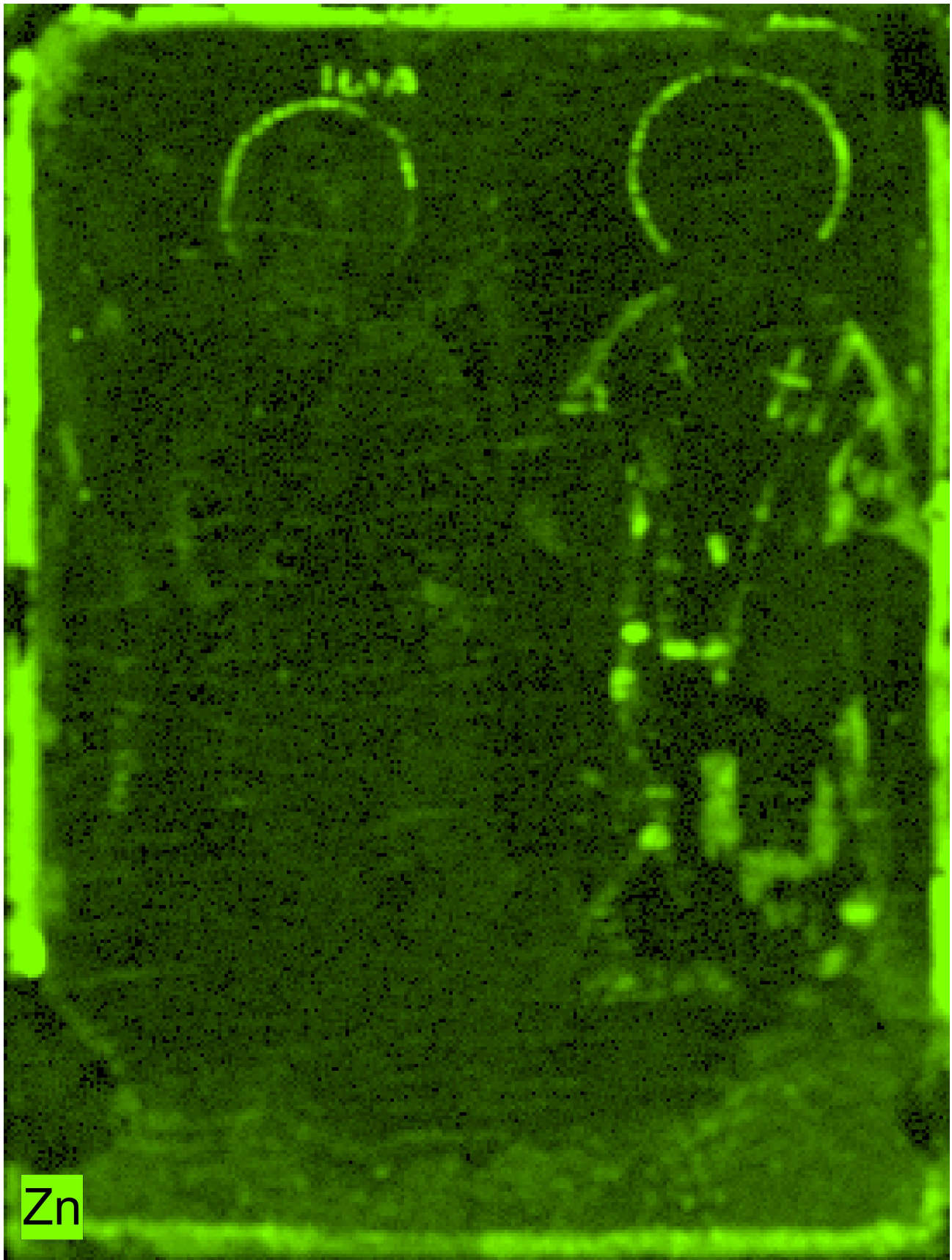








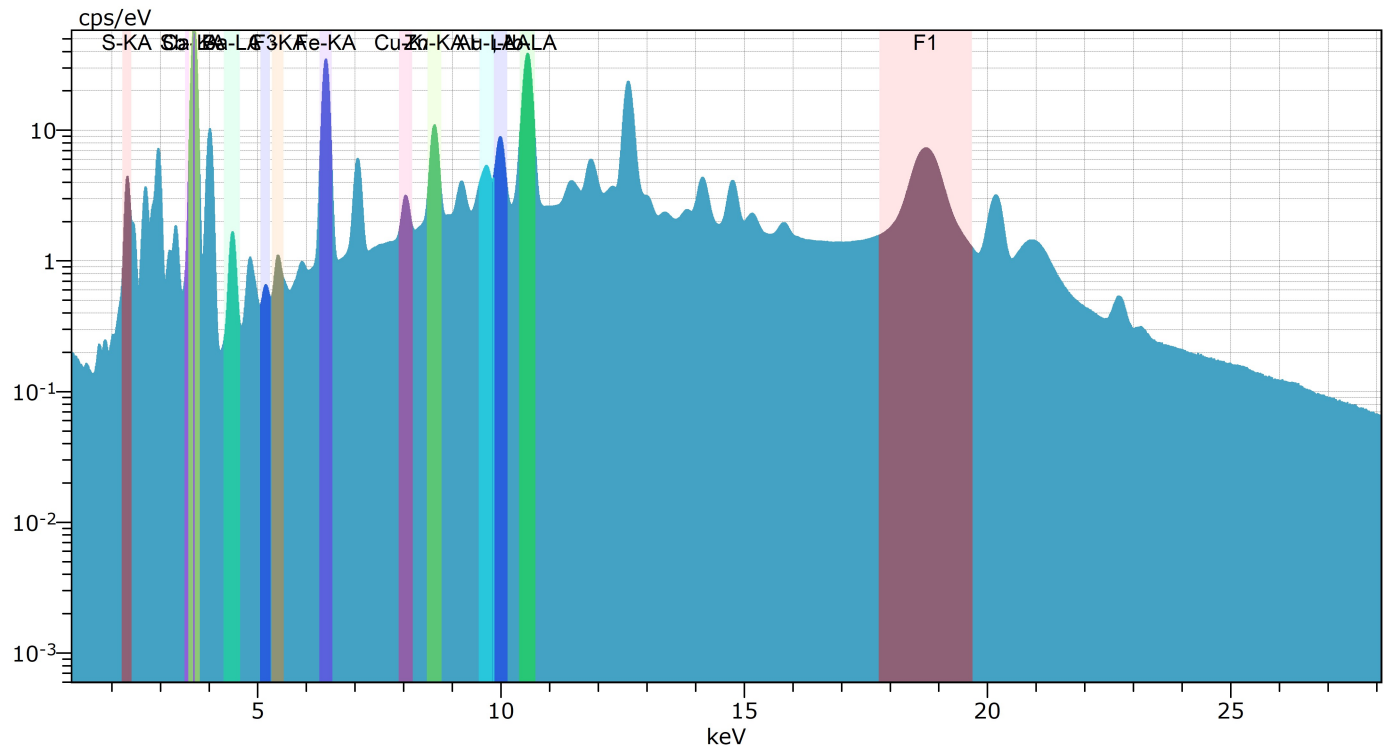






Compton Peak

3 cm



### Mapping parameters

Width: 274 pixel  
137 mm  
Height: 364 pixel  
182 mm  
Pixel Size: 500  $\mu$ m  
Total number of pixel: 99736 pixel

### Acquisition parameters

Frame count: 1  
Pixel time: 50 ms/pixel  
Measure time: 1:13 h  
Overall time: 1:37 h  
Stage speed: 10.0 mm/s  
Stage position (X,Y,Z): 247.167;295.326;33.735 mm

### Tube parameter

High voltage: 50 kV  
Anode current: 600  $\mu$ A  
Filter: Empty  
Optic: Lens  
Collimator diameter: 0  
SpotSize: 580  
Chamber at: Air 1000 mbar  
Flow rate: --- l/min  
Anode: Rh

### Detector parameters

Selected detectors: 1  
Max. pulse throughput: 275000 cps